

1.

2.

f

- 
- 
-

5,,,10) \*10-5

(10-7,,,10-9)

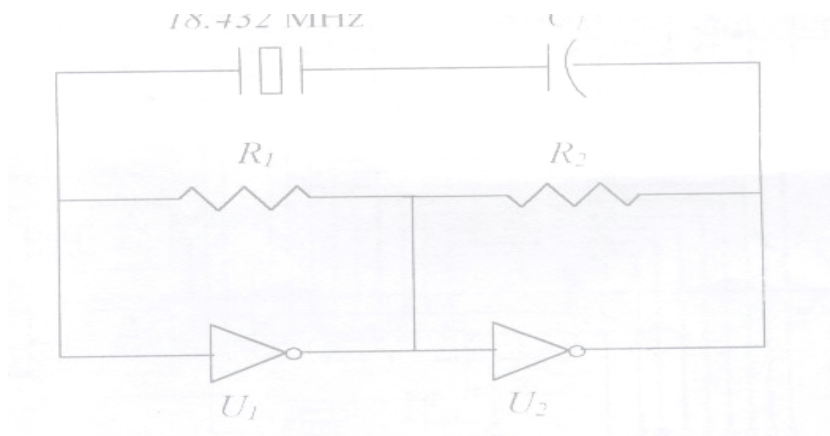
(

3.

DIV-4D

18.432 MHz

f0



	74393	bit -
32	576 K	
14-	CLKA	
QA,QB,QC,QD		2,4,8,16
		16
7492	.7491	
QA,QB,QC,QD		576
	2,6,6,12	QA=288 KHz,
QB=144KHz, QC=48KHz, QD=48KHz-		

7492 bit-

7410

48

7410-

96

IC9 7492- 14- 48 - clock-  
, 9- 8 12- 24 -

7492

8,24

3.

1.

, IC1-

2. IC2 74393-

3.

4.

IC10-7493-

5. IC28, 29-7410-